



Quick Tension System

QTE 230V

- INFORMAZIONI TECNICHE
- TECHNICAL DATA SHEET

- SERIES 230 V
- **A2M002**



Bonomi s.r.l. Unipersonal Company

Head Office: Via Mauro Pagano,63
20145 Milano
Italy

Facility: Via dell'Industria 2
14047 Mombercelli
Asti Italy

Phone: +39 0141 955 390

www.bonominet.it



Technical data Sheet


MODELLO - Model - Modell - Modelo - Model - Modèie - Movrt.Ao - Mode	MITO QTE A2M002	
TENSIONE - Voltage - Spannung - Tensao - Voltaje - Spriding - Tension - 1-1Ackrpiq Tdoq - Voltage	V	230- 240
GIRI A VUOTO - No-Load R.P.M. - Leerlaufdrehzahl - R.P.M.Sern Carga - Velocidad Sin Carga - Tomgangshastighed - Regime Au Point Mort - I rpotpig Xwpfs 9oprio - Snelheid Onbelast	R.P.M.	9400 / 6150
VELOCITA' PERIFERICA A VUOTO - No Load Peripheral Velocity	m/s	20,9
FREQUENZA - Frequency Frequenz - Frequência - Frecuencia - Frekvens - Fréquence Euxvatiya - Frequentie	Hz	50 / 60
CARICO NOMINALE - Nameplate Load - Nennleistung - Carga Nominal - Carga de Placa - Nominel Ydelse - Puissance Nominale - Nominaal Vermogen		
CORRENTE NOMINALE - Nameplate Current - Nennstrom - Corrente Nominai - Corriente De Placa - Mwrkestrom - Courant Nominai - Ovopacyrikó PEùpu - Nominaalstroom	A	14 / 19
POTENZA ASSORBITA NOMINALE - Nameplate Input Power - Nenaufnahmeleistung - Potência De Admissào Nominai - Alimentación De Entrada De Placa - Indgangshastighed - Puissance D'entrée Nominale - Ovoucto nrA Icxés Elo 65ou - Aantooptroom	W	3420 / 4400
GIRI A CARICO NOMINALE - Nameplate Load R.P.M. - Lastdrehzahl - R.P.M. Da Carga Nominai - Velocidad De Carga De Placa - Belastningsomdrejningshastighed - Régime Nominai - E rpoqpt ovouctimikou chop-tiou - Snelheid Belast	R.P.M.	9400 / 6150
VELOCITA' PERIFERICA A CARICO NOMINALE - Nameplate Peripheral Velocity	m/s
POTENZA RESA NOMINALE - Nameplate Output Power - Nennabgabeleistung - Potência De Salda Nominai - Alinnentacian De Selida De Placa - Udgangshastighed - Puissance De Sortie Nominai - Ovopaccrikí loxlis Et óóou - Uitvoerstroorn	W	3420
CARICO DI FRIZIONAMENTO ELETTRONICO - Electronic Clutch Intervention		
CORRENTE MASSIMA ASSORBITA - Maximum Input Current - Maximale Stromaufnahme - Corrente Màxima De Admissào - Corriente De Entrada Màxima - Maksimal Indgangsspffinding - Courant D'entrée Maximum - Méyierro PENa Eiciti6ou - Maximale ingangsstroom	A	20
POTENZA MASSIMA RESA - Maximum Output Power - Maximale Abgabeleistung - Potência Màxima De Salda - Alimentación De Salirla Màxima - Maksimal Udgangsspmding - Puissance De Sortie Maximum - Mév]oFn loxúg gi56ou - Maximale Uitgangsstroom	W	4400



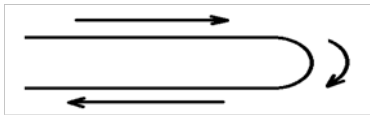
Technical Data Sheet

MODELLO - Model - Modell - Modeio - Modelo - Model - Modèle - Movrt.Ao - Mode	MITO QTE A2M002
--	----------------------------------

DISPOSITIVI DI SICUREZZA - Safety Devices

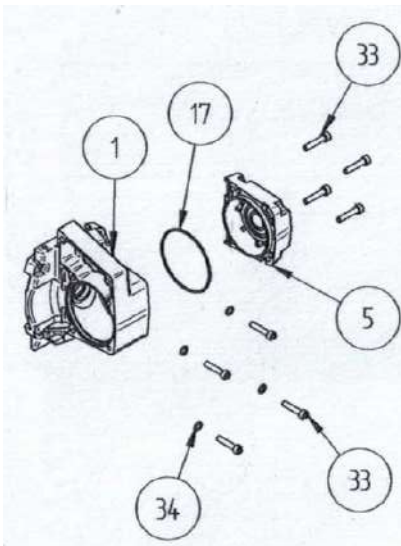
FRIZIONE ELETTRONICA MULTIFUNZIONE - Multifunction Electronic Clutch - Multifunktionselektronik - Embraigem Automatica Multi-Funções - Torna Electronica Multifundón - Multifunktionselektronik - Mandrin Electronique Multifonction - Flackrövikag ouptrAttugg	ELECTRONIC
AVVIAMENTO LENTO E LIMITATORE DI SPUNTO ALL'AWIO - Soft-Start - Softstart - Arranque Lento - Inicio Suave - Softstart - Démarrage Progressif - OuctÀrj ciedvrion - Softstart	
PROTEZIONE DA SOVRACCARICO - Overload Protection - Oherlastschutz - Protecção Contra Sobrecarga - Protección Ante Sobrecargas - Overlastbeskyttelse - Protection Contre Les Surocharges - Tipouroola arra YrrEpcpCip'rwon - Overbelastingsbeveiliging	
INTERRUPTORE DIFFERENZIALE PORTATILE (PRCD) - Portable Residual Current Device - Mobiler Fehlerstromschuizschalter - Dispositivo De Corrente Residual Portati' - Dispositivo De Corriente Residual Partatil - Mobil Fejstromsbeskyttelseskontakt - Dispositif	$I_{\Delta n} = 6 \text{ mA}$
COLLEGAMENTO A TERRA - Ground Connection - Erdung - Lignao A Terra - Conexión De Tierra - Jordforbindelse - Mise A La Terre - ECivóson Fcbang - Aarding	

ALTRI DATI

SENSO DI ROTAZIONE DELLA CATENA - Direction Of Saw Chain Rotation		
LUNGHEZZA MASSIMA DELLA BARRA - Max Guide Bar Length	mm / inch	350 / 14"
PESO - Weight - Gewicht - Peso - Peso - Vwgt - Poids - Bdpog - Gewicht	kg	12
QUANTITÀ E TIPO DI OLIO - Quantity And Type Of Oil - Menge Und Typ Gelriebeal - Quantidade E Tipo De D'e° - Cantidad Y Tipo De Aceite - Oliemngde Og -Type - Quantite Et Type D'huile - riocr6Trrra kai rerrrog Actólou - Hoeveeiheid En Soort Olie	g	50
	EP.68 - 150cST (ex. ESSO Spartan E.P.68; ESSO Spartan E.P. 150)	
SPINA - Plug - Stecker - Ficha - Torna - Stikprop - Prise - C% - Steker	CEE 17 4H	

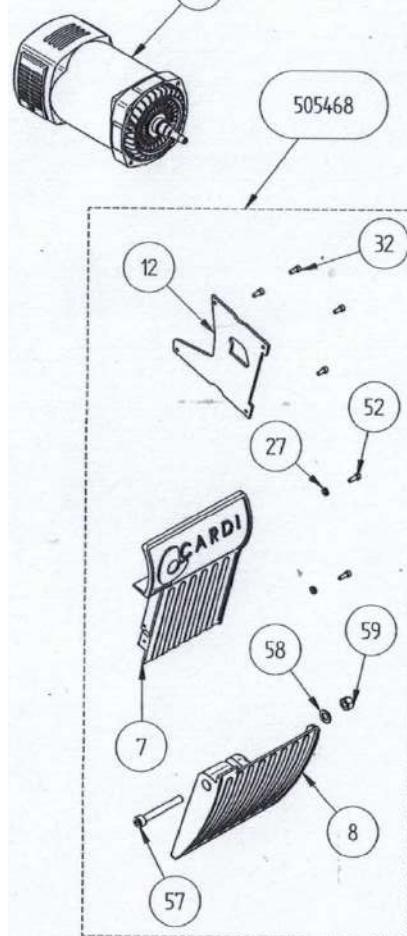
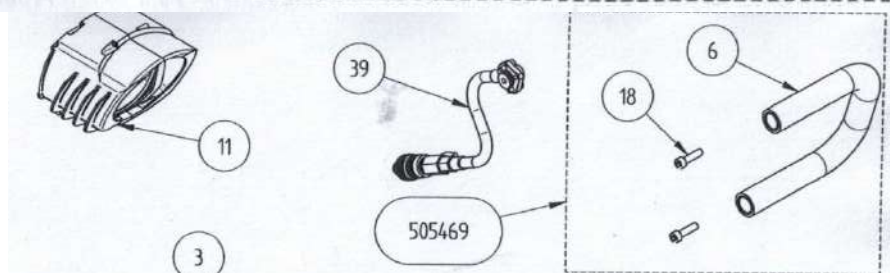
N.B. IMPORTANTE La marcatura CE esposta in questa scheda come in tutte le altre è riferita e limitata al motore elettrico fornito dalla CARDI srl. Per il momento il prodotto MITO non è ancora stato sottoposto a marcatura CE. Appena il prodotto verrà marcato la presente dichiarazione sparirà dalle indicazioni tecniche che determinano il prodotto finito MITO QTE
 The CE marking shown in this sheet as in all the others refers to and is limited to the electric motor supplied by CARDI srl. For the moment, the MITO product has not yet undergone CE marking. As soon as the product is marked, this declaration will disappear from the technical indications that determine the finished product MITO QTE

MITO QTE Electric Model A2M002 Spare part View (1)



Item 5 - 505451

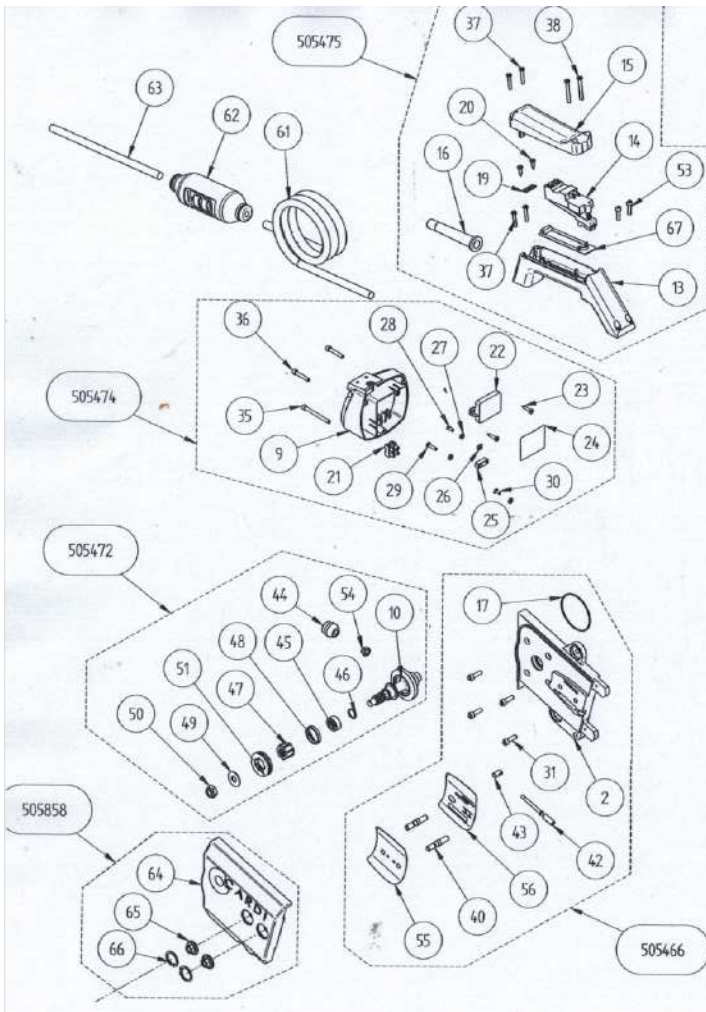
Item	Codice	Qty.
80	505427	1
81	500210	1



Item	Codice	Qty.	Item	Codice	Qty.
1	505856	1	34	502088	4
2	505457	1	35	503410	1
3	505448	1	36	500903	2
5	505451	1	37	501850	4
6	505438	1	38	505549	2
7	505432	1	39	504568	1
8	505433	1	40	505193	2
9	505452	1	42	505521	1
10	505456	1	43	505522	1
11	505453	1	44	505461	1
12	505431	1	45	505133	1
13	505429	1	46	505041	1
14	503484	1	47	505252	1
15	503636	1	48	505305	1
16	502917	1	49	505398	1
17	502052	2	50	505293	1
18	502514	2	51	505399	1
19	501156	1	52	501181	2
20	501155	2	53	500007	2
21	502539	1	54	505462	1
22	503471	1	55	505524	1
23	503250	2	56	505523	1
24	503348	1	57	500349	1
25	501859	1	58	500355	1
26	501720	1	59	500344	1
27	500292	5	61	504909	1
28	501332	1	62	502583	1
29	501860	1	63	502974	1
30	502280	1	64	505854	1
31	501645	4	65	505859	2
32	502278	4	66	505861	2
33	500796	8	67	505857	1



MITO QTE Electric Model A2M002 Spare part View (2)



Item 1 - 505856

Item	Codice	Qty.
70	505855	1
71	501174	1
72	501821	1
73	500210	1

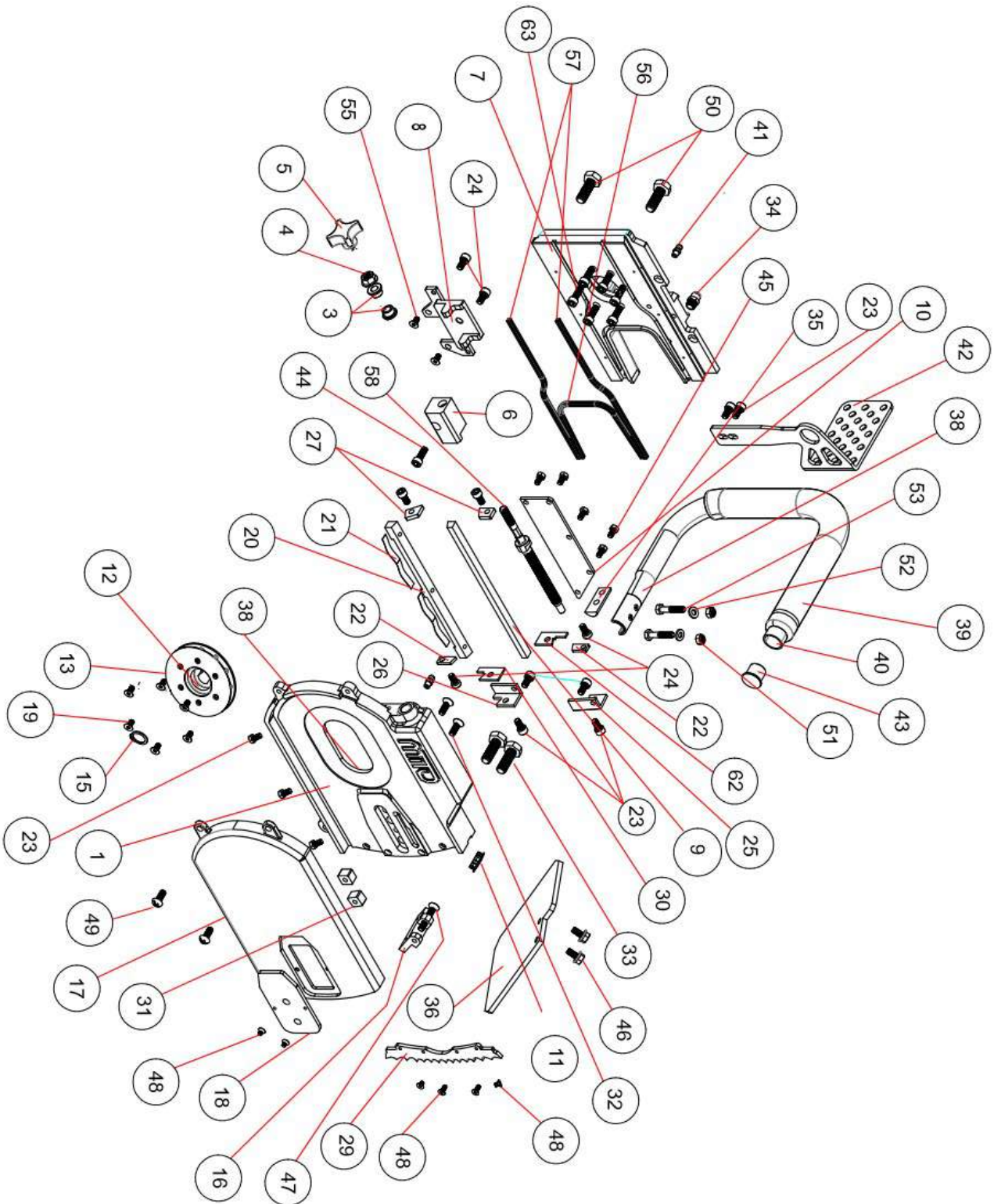
Item 2 - 505457

Item	Codice	Qty.
75	505425	1
76	501747	1
77	500096	1

Item 3 - 505448

Item	Codice	Qty.
85	505445	1
86	505443	1

MITO QTH 12 Hydraulics Model A2M002 Spare part View (3)

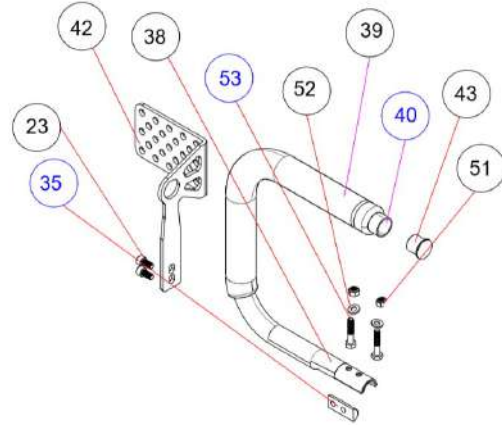


MITO QTH 12 Hydraulics Model A2M002 Spare part View (3)

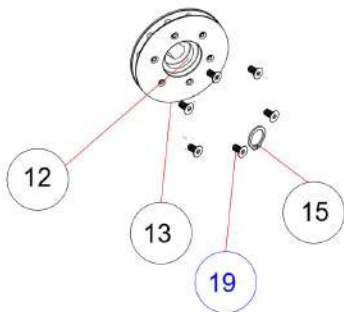
MITO QTE 230 V		A2M002	
ITEM NO.	Part n°	DESCRIPTION	QTY.
1	A3M001003	Main body - Bar Holder	1
2	A2M001075	CARDI motor preassembled part	1
3	A3M004020	Main screw Brass bushing	2
4	A3M004021	M8 Flanged nut	1
5	A3M004022	M8 Threaded Knob	1
6	A3M004005	QT Barrel, bronze	1
7	A2M001001	Base Support - Motor Plate	1
8	A3M004001	Nut Bracket (New Pennon)	1
9	A3M001002	Upper bronze slide	1
10	A3M001005	Main Screw Box Cover	1
11	A3M004023	Metal Round Plug for pannel	1
12	A2M004013	Sprocket Body 1543 QTHU Z12	1
13	A2M004014	Dia 82 mm Sprocket Flange M4 Screws	1
14	A3M004024	M4x6 FHCS testa svasata esagono inc. o croce	6
15	A3M004025	Seeger 0,588" groove D.09"Od clearance	1
16	A3M001044	Bracket Mood Flap	1
17	A3M001004	Main side Cover	1
18	A3M001033	Bar Clamp Flange (cover)	1
19	A3M001056	M4 x 10 SHCS	6
20	A3M001021	Lower bronze Rail	1
21	A3M004027	Wave Spring 1 mm th...mm	2
22	A3M004003	Front Bronze bar stopper	2
23	A3M001070	M6x10 SHCS	7
24	A3M004029	M6x12 LSHCS	4
25	A3M004002	Upper Front Seal Locker	1
26	A3M004006	Lower Front Seal Locker	1
27	A3M004004	Back Bronze slide stopper	2
29	A3M004008	Tiger Grip	1
30	A3M004009	Front Lower back scraper	1
31	A3M001032	Bar Holder BLOCK	2
32	A3M004030	M6x22 SHCS	2
33	A3M004031	M10x30 HHCS	2
34	A3M004032	Water Connection Plug	1
35	A3M001042	Handle screw bushing	1
38	A3M004047	OR MAIN BODY BAR HOLDER	1
36	A3M001045	Mud Flap	1
39	A3M004010	Yellow pipe corrugated cover	1
40	A3M001046	Handle	1
41	A3M001037	Grease nipple M6x1	2
42	A3M001041	Handle Link Guitar + protection	1
43	A3M004007	Rubber Cup Handle OD 22, ID 19	1
44	A3M001071	M6x15 SHCS	1
45	A3M004036	M5x10 HHCS	5
46	A3M004037	M6x12 FHHCS	2
47	A3M004038	M6x35 FHCS	1
48	A3M004039	M4X6 FHCS	2
49	A3M004040	M6x16 SHCS	2
51	A3M004041	M6 locknut	2
52	A3M004042	M6 X 12 STEEL washer	2
53	A3M004039	M6x30 HHCS	2
54	A3M004043	M4X6 FHCS	2
55	A3M004044	M5x10 FHCS	2
56	A3M004045	OR Cord C shaped front	1
57	A3M004046	OR Cord shaped T.B.	2
58	A3M001010	Main sciew	1
62	A3M004011	Front Upper back scraper	1
63	A2M004080	M5 X50 SHCS	4

MITO QTE Electric Model A2M002 Spare part Preassembled

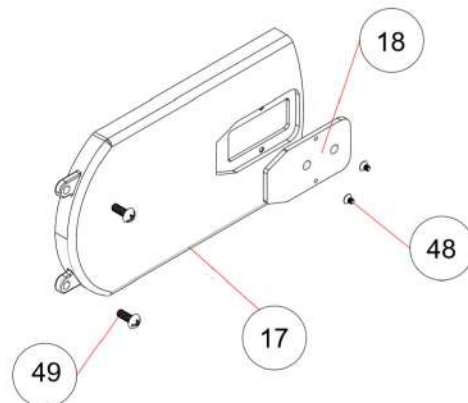
A3S004001 - Handle



A3S004002 - Sprocket Z12

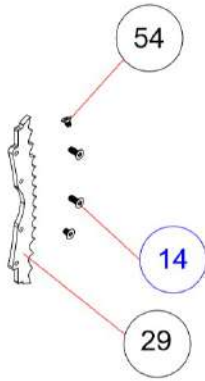


A3S004003 - Main Side Cover

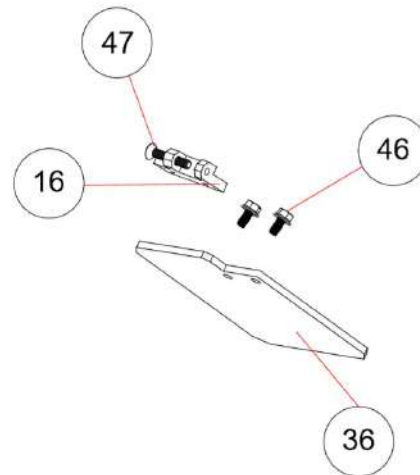


MITO QTE Electric Model A2M002 Spare part Preassembled

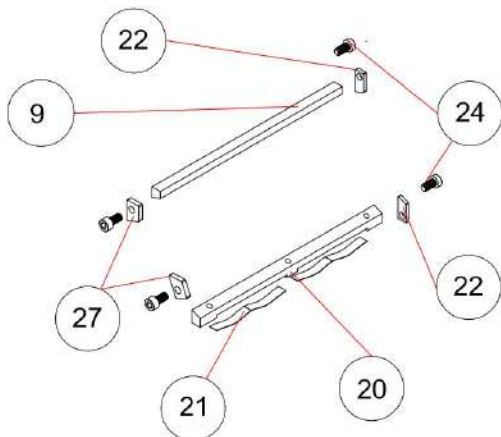
A3S004004 - Tiger Grip



A3S004005 - Mud Flap

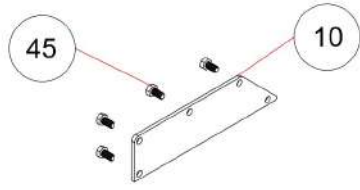


A3S004006 - Bronze rail

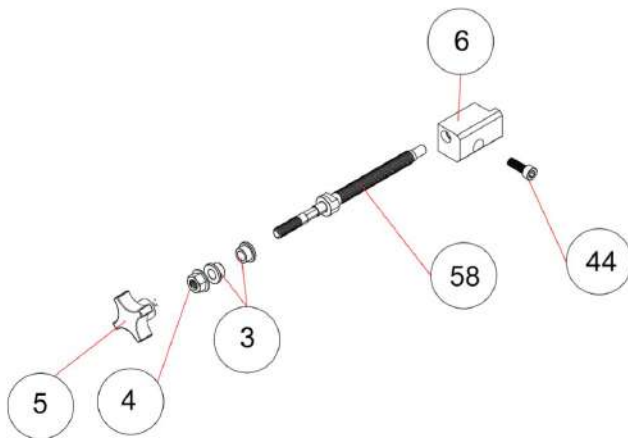


MITO QTE Electric Model A2M002 Spare part Preassembled

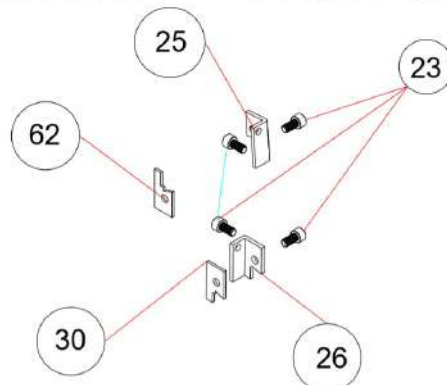
A3S004007 - Main Screw Bar Cover



A3S004008 - Main Screw



A3S004009 - Front Scraper



MITO QTE Electric Model A2M002 Spare part Preassembled

PART ASSEMBLED

A3S004001 Handle			
ITEM NO.	Part n°	DESCRIPTION	QTY.
23	A3M001070	M6x10 SHCS	7
35	A3M001042	Handle screw bushing	1
39	A3M004010	Yellow pipe corrugated cover	1
40	A3M001046	Handle	1
42	A3M001041	Handle Link Guitar + protection	1
43	A3M004007	Rubber Cup Handle OD 22, ID 19	1
51	A3M004041	M6 locknut	2
52	A3M004042	M6 X 12 STEEL washer	2
53	A3M004039	M6x30 HHCS	2

A3S004002 Sprocket Z12			
ITEM NO.	Part n°	DESCRIPTION	QTY.
12	A3M004013	Sprocket Body 1543 QTHU Z12	1
13	A3M004014	Dia 82 mm Sprocket Flange	1
15	A3M004025	Seeger 0,588" groove D.09"	1
19	A3M001056	M4 x 10 SHCS	6

A3S004003 Main side Cover			
ITEM NO.	Part n°	DESCRIPTION	QTY.
17	A3M001004	Main side Cover	1
18	A3M001033	Bar Clamp Flange (cover)	1
48	A3M004039	M4X6 FHCS	2
49	A3M004040	M6x16 SHCS	2

A3S004004 TIGER GRIP			
ITEM NO.	Part n°	DESCRIPTION	QTY.
14	A3M004024	M4x6 FHCS	6
29	A3M004008	Tiger Grip	1
54	A3M004043	M4X6 FHCS	2

A3S004005 Mud Flap			
ITEM NO.	Part n°	DESCRIPTION	QTY.
16	A3M001044	Bracket Mood Flap	1
36	A3M001045	Mud Flap	1
46	A3M004037	M6x12 FHHCS	2
47	A3M004038	M6x35 FHCS	1

A3S004006 Bronze Rail			
ITEM NO.	Part n°	DESCRIPTION	QTY.
9	A3M001002	Upper bronze slide	1
20	A3M001021	Lower bronze Rail	1
21	A3M004027	Wave Spring 1 mm th...mm	2
22	A3M004003	Front Bronze bar stopper	2
24	A3M004029	M6x12 LSHCS	4
27	A3M004004	Back Bronze slide stopper	2

A3S004007 Mainscrew Bar Cover			
ITEM NO.	Part n°	DESCRIPTION	QTY.
10	A3M001005	Main Screw Box Cover	1
45	A3M004036	M5x10 HHCS	5

A3S004008 Main Screw			
ITEM NO.	Part n°	DESCRIPTION	QTY.
3	A3M004020	Main screw Brass bushing	2
4	A3M004021	M8 Flanged nut	1
5	A3M004022	M8 Threaded Knob	1
6	A3M004005	QT Barrel, bronze	1
44	A3M001071	M6x15 SHCS	1
58	A3M001010	Main scw	1

A3S004009 Front Scraper			
ITEM NO.	Part n°	DESCRIPTION	QTY.
23	A3M001070	M6x10 SHCS	4
25	A3M004002	Upper Front Seal Locker	1
26	A3M004006	Lower Front Seal Locker	1
30	A3M004009	Front Lower back scraper	1
62	A3M004011	Front Upper back scraper	1