



www.bonominet.it



H 10-12 GPM

- INFORMAZIONI TECNICHE
- TECHNICAL DATA SHEET

- Hydraulic Chainsaw
- **Code: A6M001**



Bonomi s.r.l. *Unipersonal Company*

Head Office: Via Mario Pagano,63
20145 Milano
Italy

Facility: Via dell'Industria 2
14047 Mombercelli
Asti Italy

Phone: +39 0141 955 390

www.bonominet.it

MITO QTH 10-12


Dati Tecnici \ Performance data

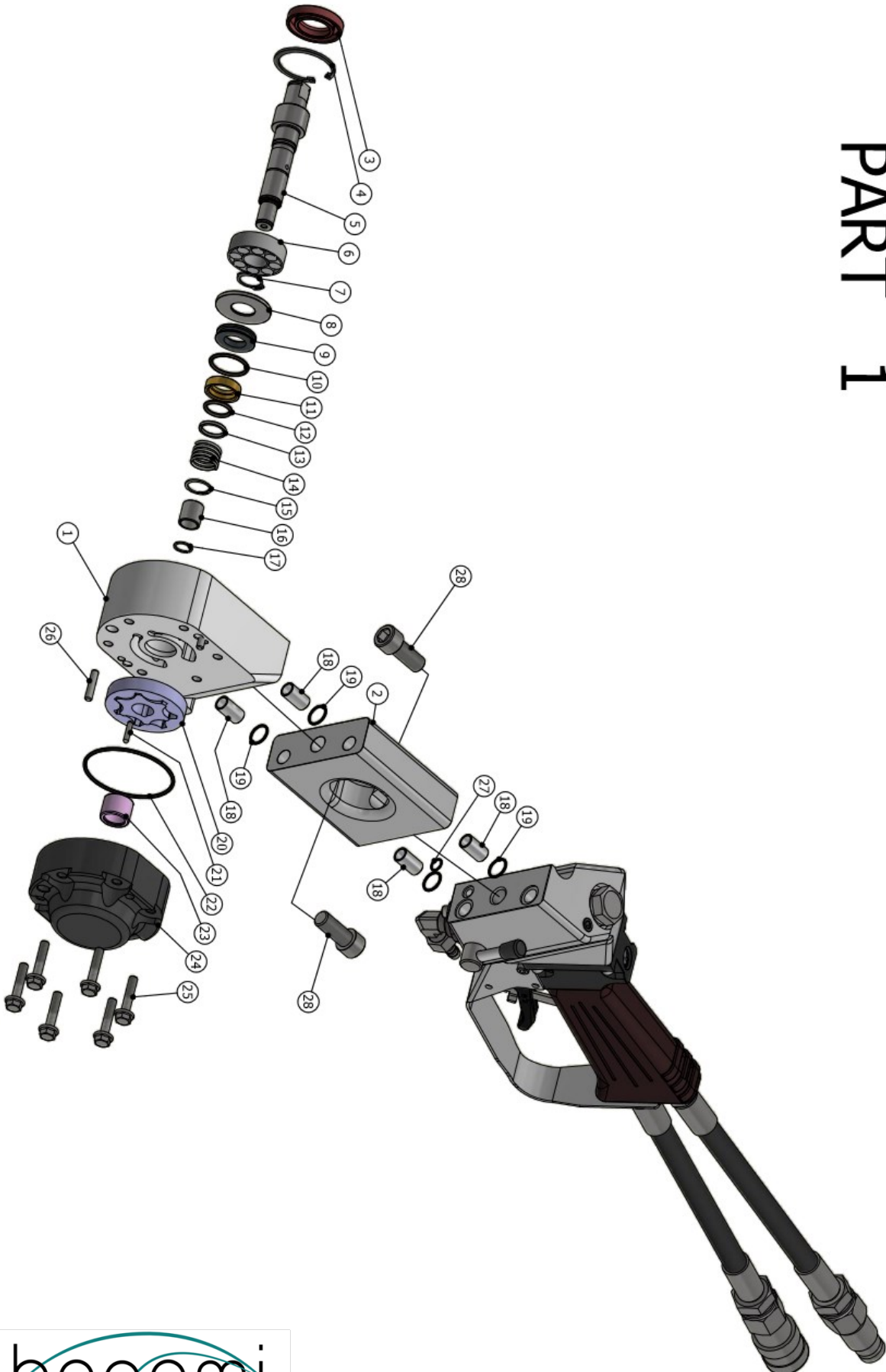
MODELLO - MODEL	MITO H 10-12 A6M001
<u>INFORMAZIONI TECNICHE</u>	
<u>TECHNICAL DATA SHEET</u>	English (Metric)
PESO MACCHINA SENZA BARRA E CATENA Machine Weight without bar and chain	25,3 lbs (11,5 Kg)
MISURA DELLA BARRA Bar sizes Range	10", 15", 20", 25" (mm 254, 381, 500, 640)
DIMENSIONI (con barra da 15") Dimensions (with 15" guidebar)	46 x 10,25 x 12 in. (116,9 x 26,4 x 30,5 cm)
PROFONDITA' DI TAGLIO (con barra da 15") Depth of cut (with 15" bar)	15 in (381 mm)
<u>CATENA Chain</u>	
NUMERO SEGMENTI PER CATENA DA 15" Chain Segments number for 15 in. bar	57
PASSO MAGLIE CATENA Chain pitch Suitable for the following	3/8, 0,444 , 0,456
SPESSORE DEI SEGMENTI Chain Segment Width	0,225" - (5,8 mm)
<u>BARRA—Bar</u>	
INGRANAGGIO DI TESTA Nose Sprocket	Bearing

	Dati Tecnici \ Performance data
--	----------------------------------------

MODELLO - Model	MITO H 10-12 A5M001
<u>CARATTERISTICHE IDRAULICHE</u> <u>Hydraulics Specification sheet</u>	English (Metric)
SISTEMA TIPO—Type of system	Open center
PORTATA NOMINALE - Nominal Flow rate	10-12 gpm (37-45 lpm)
MASSIMA PRESSIONE DI RITORNO—back pressure Max	50 psi (3,5 bar)
LUNGHEZZA MASSIMA DEI TUBI— Hose length Max	100 ft (30 m)
GIUNTO—Couplins	1/2" HTMA flush face
<u>RAFFREDDAMENTO ACQUA—Water requirements</u>	
FLUSSO ACQUA MINIMO — Minimal Flow rate	2,5 gpm (9,5 l/min)
PRESSIONE MAX — Pressure Max.	50 psi (3 bar)
<u>PRESTAZIONI - Operation</u>	
POTENZA A (172 bar) - Power @2500 psi	14 hp (10,3 kw)
TORSIONE ALL'ALBERO A (172 bar) - Torque @ 2500 psi (Teoric)	161,15 in.-lb (18,2 Nm)
VELOCITA' MASSIMA—Speed Max RPM	6500 rpm
PRESSIONE DI ESERCIZIO—Operating pressure	2.320,6 Psi (160 bar)
<u>VIBRAZIONI E SUONO—Vibration and Sound</u>	
LIVELLO DI VIBRAZIONE—Vibrtrion level (misurato durante iol taglio con barra da 15" e catena reverse 225B—cheked during cutting with 15" bar and chain RV 225B)	A=5,65 M/S ²
SUONO PERCEPITO DISTANZA 1 m —Sound pressure @1m (misurato durante iol taglio con barra da 15" e catena reverse 225B—cheked during cutting with 15" bar and chain RV 225B)	88dba
<u>OLIO IDRAULICO RACCOMANDATO—Recommended Hydraulic Oil</u>	
VISCOSITA' - Viscosity	140-225 SUS @100°F (28-45cSt a 38°C) 40 min. SUS @210°F (8 min.cSt a 99°C)
PUNTUNTO DI INCENDIO—flash Point	340°F (170°C)
PUNTO DI CONGELAMENTO—Pour Point	-30°F (-34°C)
MOLTI TIPI DI OLIO IDRAULICO SONO DISPONIBILI SUL MERCATO TRAMITE I LOCALI DISTRIBUTORI. COME FABBRICANTI DELLA MACCHINA SUGGERIAMO INDICATO. I TIPI DI OLIO IDRAULICI SONO TANTI PER ESSERE INDICATI IN QUESTO MANUALE —Many types of compatible hydraulic oil are available through your local dealer/distributor. As an original equipment manufacturer, we suggest the indicated one. Hydraulic oil types are too numerous to list in this manual.	GRADE ISO VG 32 Hydraulic turbine oil

MITO Hydraulic Model A6M001 Spare Part View (1)

PART 1

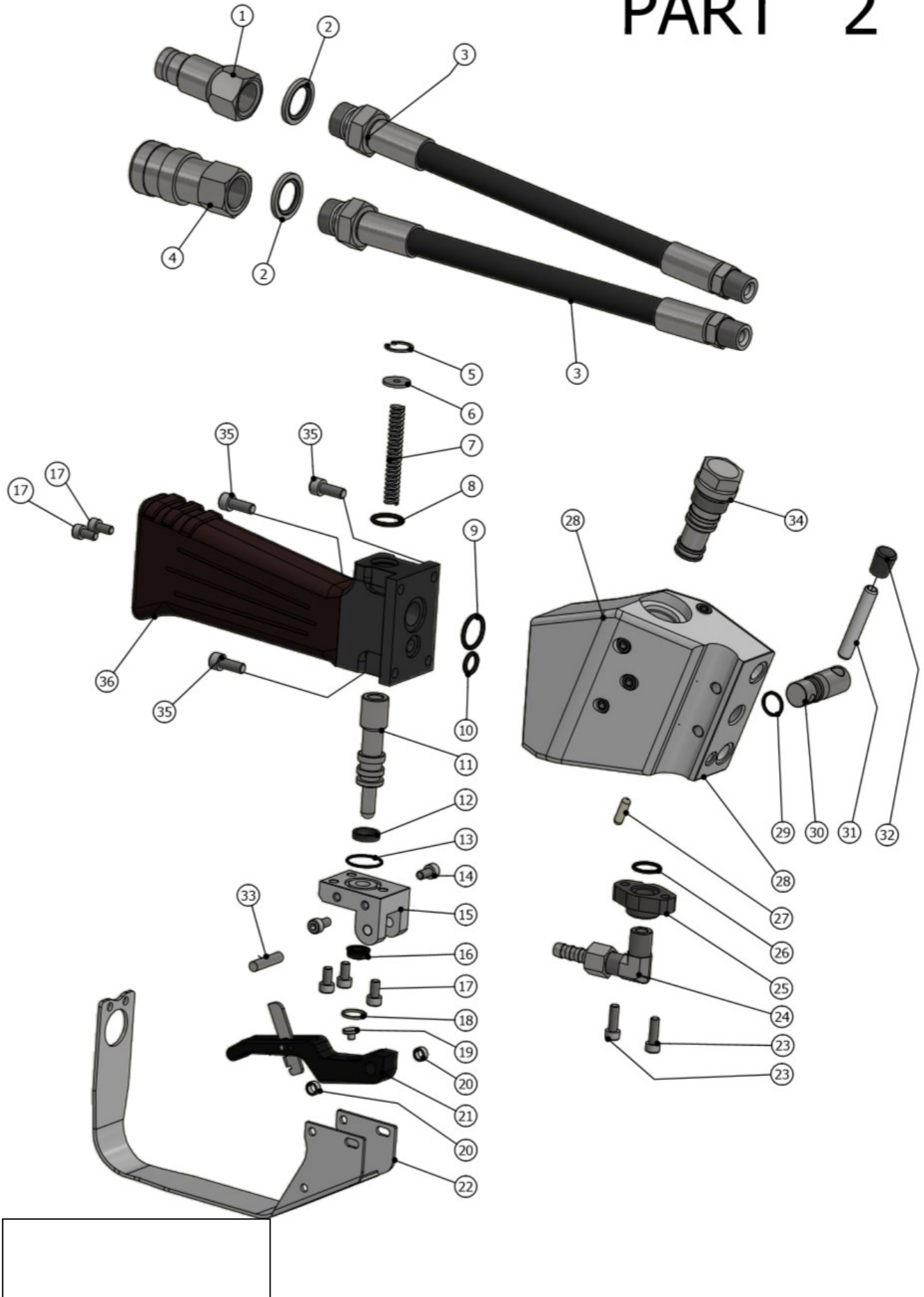


MITO Hydraulics Assembly Model A6M001 Spare parts list (1)

PARTE 1			PART LIST Reference exploded view May 2019 revision 0		
POSITION	QUANTITY	DESCRIZIONE	DESCRIPTION	CODICE DOA DOA CODE	
1	1	CORPO PORTA MOTORE	MOTOR BODY	D711015	
2	1	CORPO INTERMEDIO	CENTRAL BODY	D721243	
3	1	GUARNIZIONE	GASKET	A651230	
4	1	SEEGER	SEEGER	A501026	
5	1	ALBERINO	SHAFT	D701611	
6	1	CUSCINETTO	BEARING	A611045	
7	1	SEEGER	SEEGER	A501025	
8	1	DISTANZIALE CUSCINETTO	BEARING SPACER	D701354	
9	1	CONTROFACCIA TENUTA MECCANICA	MECHANICS SEALING FACING	D701353	
10	1	O-RING	O-RING	A651229	
11	1	TENUTA MECCNICA	MECHANICS SEALING	D701352	
12	1	O-RING	O-RING	A651120	
13	1	RONDELLA	WASHER	D701368	
14	1	MOLLA	SPRING	D501039	
15	1	SEEGER	SEEGER	A501024	
16	1	BOCCOLA	BUSHING	A611050	
17	1	SEEGER	SEEGER	A501028	
18	4	SPINA RIFERIMENTO	DRIVE PIN	D701358	
19	4	O-RING	O-RING	A651221	
20	1	ASSIEME ROTORI 6CC	GEROTORS ASSY	D921009	
21	1	RULLO TRASCINAMENTO	KEY	A611044	
22	3	O-RING	O-RING	A651112	
23	1	CUSCINETTO A RULLI	NIDDLE BEARING	A611046	
24	1	COPERCHIO MOTORE	MOTOR CUP	D711014	
25	6	VITE	SCREW	A621271	
26	2	SPINA	DOWEL PIN	A631041	
27	1	O-RING	O-RING	A651221	
28	2	VITE	SCREW	A621273	

MITO Hydraulics Assembly Model A6M001 Spare parts View (2)

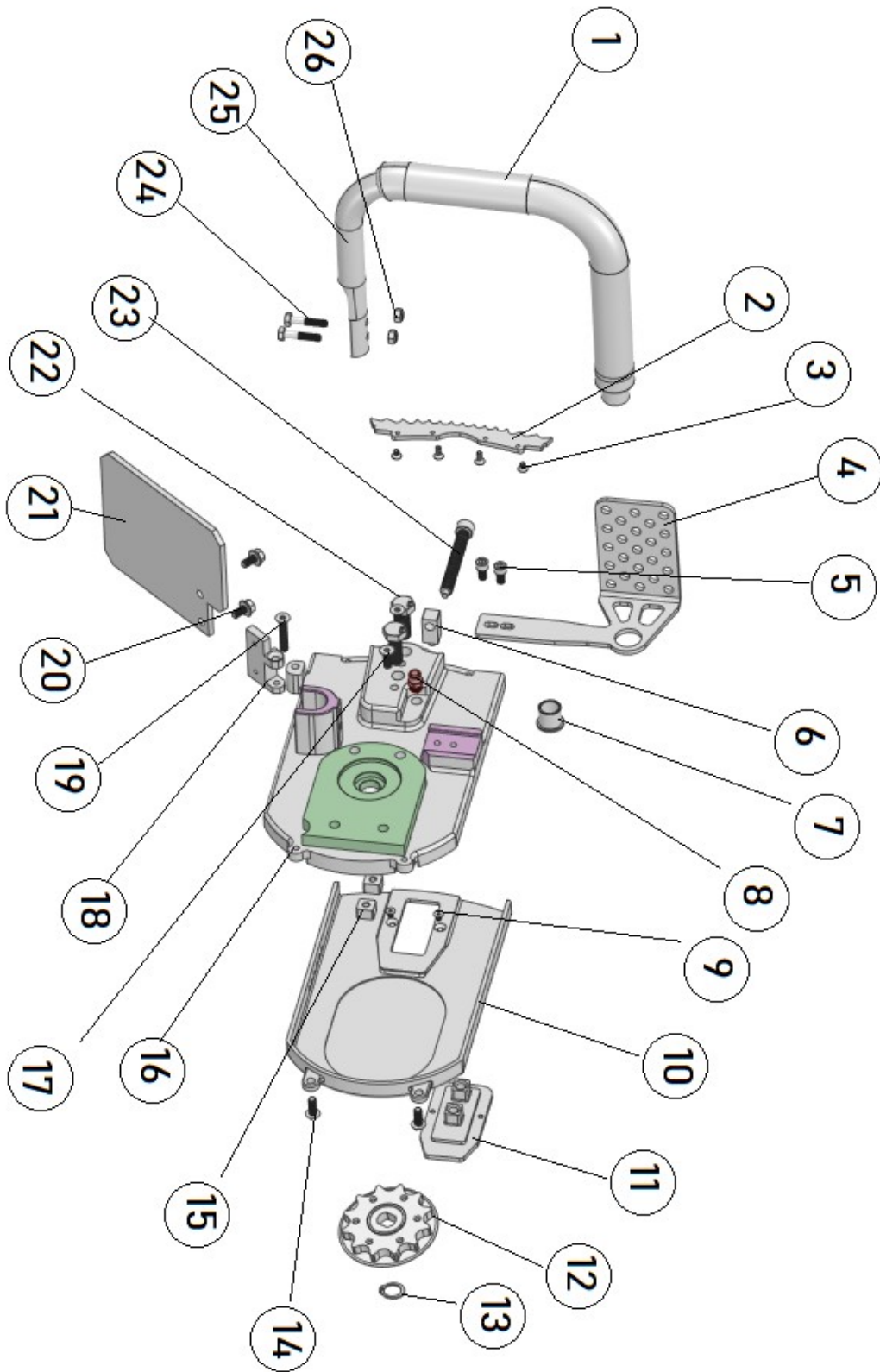
PART 2



MITO Hydraulics Assembly Model A6M001 Spare parts list (2)

PARTE 2			PART LIST Reference exploded view May 2019 revision 0		
POSITION	QUANTITY	DESCRIZIONE	DESCRIPTION	CODICE DOA DOA CODE	
1	1	INNESTO RAPIDO MASCHIO	MALE QUICK RELEASE COUPLING	A161026	
2	2	RONDELLA DI TENUTA	SEAL WASHER	A651200	
3	2	ASSIEME TUBO	HOSE ASSY	D151028	
4	1	INNESTO RAPIDO FEMMINA	FEMALE QUICK RELEASE CUPLING	A161025	
5	1	SEEGER	SEEGER	A501015	
6	1	DISTANZIALE	SPACER	D401793	
7	1	MOLLA	SPRING	D501044	
8	1	O-RING	O-RING	A651306	
9	1	O-RING	O-RING	A651053	
10	1	O-RING	O-RING	A651066	
11	1	SPOOL ON-OFF	SPOOL ON-OFF	D701469	
12	1	O-RING	O-RING	A651305	
13	1	O-RING	O-RING	A651075	
14	2	VITE	SCREW	A621127	
15	1	FORCELLA	FORK	D721235	
16	1	GUARNIZIONE	SEAL	A651315	
17	5	VITE	SCREW	A621127	
18	1	SEEGER	SEEGER	A501034	
19	1	PASTIGLIA DI CONTATTO	TAPPET	D701244	
20	2	BOCCOLA	BUSHING	A611028	
21	1	LEVA ON-OFF	ON-OFF LEVER	D921217	
22	1	PROTEZIONE	GUARD	D401252	
23	2	VITE	SCREW	A621150	
24	1	RACCORDO PORTA GOMMA	ELBOW COUPLING	D901157	
25	1	FLANGIA ATTACCO ACQUA	WATER FLANGE CLAMP	D711018	
26	1	O-RING	O-RING	A651075	
27	1	SPINA	DOWEL PIN	A631042	
28	1	BLOCCO VALVOLE	MAIN FOLD	D711017	
29	1	O-RING	O-RING	A651272	
30	1	RUBINETTO ACQUA	WATER TAP	D701365	
31	1	SPINA ELASTICA	SPRING PPIN	A631043	
32	1	PUNTALE LEVA	KNOB	A301047	
33	1	SPINA	PIN	A631030	
34	1	VALVOLA PORTATA	FLOW VALVE	D131001	
35	4	VITE	SCREW	A621002	
36	1	IMPUGNTURA GOMMATA	HANDLE	D721234	

MITO Hydraulic Model A6M001 Spare Part View



MITO Hydraulics QT Model A5M001 Spare Parts list

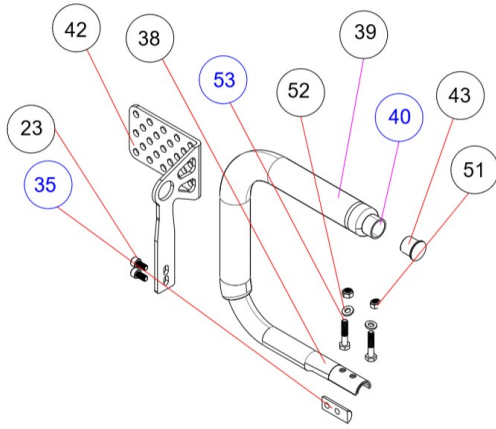
MITO H 10-12 GPM

Code A6M001

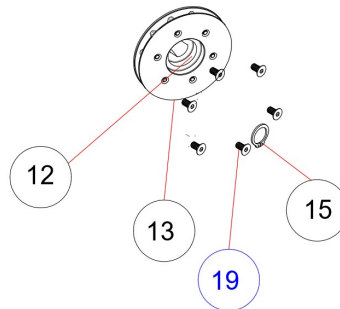
ITEM NO.	Part n°	DESCRIPTION	QTY.
1	A3M004010	Yellow pipe corrugated cover	1
2	A3M004008	Tiger Grip	1
3	A3M004039	M4X6 FHCS	4
4	A3M001041	Handle Link Guitar + protection	1
5	A3M001070	M6x10 SHCS	2
6	A6M001004	Chain tensioner Block	1
7	A3M004007	Rubber Cup Handle OD 22, ID 19	1
8	A3M004032	Water Connection Plug	2
9	A3M004039	M4X6 FHCS	2
10	A3M001004	Main side Cover	1
11	A3M001033	Bar Clamp Flange (cover)	1
12	A3SP04002	Sprocket -1547SP.Z12 H	1
14	A3M004040	M6x16 HHCS	2
15	A3M001032	Bar Holder BLOCK	2
16	A6M001003	Main body - Bar Holder	1
17	A3M004030	M6x22 SHCS	2
18	A3M001044	Bracket Mood Flap	1
19	A3M004038	M6x35 FHCS	1
20	A3M004037	M6x12 FHHCS	2
21	A3M001045	Mud Flap	1
22	A3M004031	M10x60 exa. Cup screw	2
23	A6M001005	Tensioning Screw	1
24	A3M004039	M6x30 HECS	2
25	A3M001046	Handle	1
26	A3M004041	M6 locknut	2
27	A6M001005	M8 x50 FHCS	4

MITO Hydraulics Model A6M001 Spare Part Preassembled

A3S004001 - Handle



A3S004002 - Sprocket Z12



A3S004003 - Main Side Cover

